

Winter 2021

# ASA Section on Aging and the Life Course



## News From The Chair



Dear SALC Colleagues:

Hello and happy winter! I hope everyone's winter term is off to a good start. As I write this, it is a cold but sunny 14°F, with fresh snow waiting for me to try cross-country skiing for the first time tomorrow.

This is a busy time of year for ASA and SALC. It is the season when annual meeting session organizers are reviewing submissions, ASA and SALC elections take place, SALC members are selected for the section's outstanding paper and mentoring awards, the mentoring committee is planning virtual mentoring activities for the spring, and membership renewals are due. I want to highlight a few of these activities.

### Inside this issue:

ASA Sessions	2
2021 Mentoring Events	2
Journal Showcase	3
Candidates for SALC Office	4-6
Emerging Scholar Profile	7
Getting to Know You	8
News + Announcements	8-12

First, our **section day for the 2021 conference is Sunday, August 8<sup>th</sup>**. We will send a detailed announcement later in the spring with the final program and presenters. The virtual program will operate a bit differently than last year. The sessions will be shorter (85 minutes), all sessions will use Zoom rooms provided by ASA, and only registered participants will be able to join a session. See page 2 for more details.

Second, because we won't hold our popular mentoring dinner this year, the mentoring committee (Janet Wilmoth [Chair], Catherine García, and Chrissie Edmunds) is developing ideas for **virtual mentoring engagements** instead. The virtual mentoring sessions last year were really terrific, so I'm grateful to the mentoring committee for their efforts in keeping this good thing going! Check page 2 for more information.

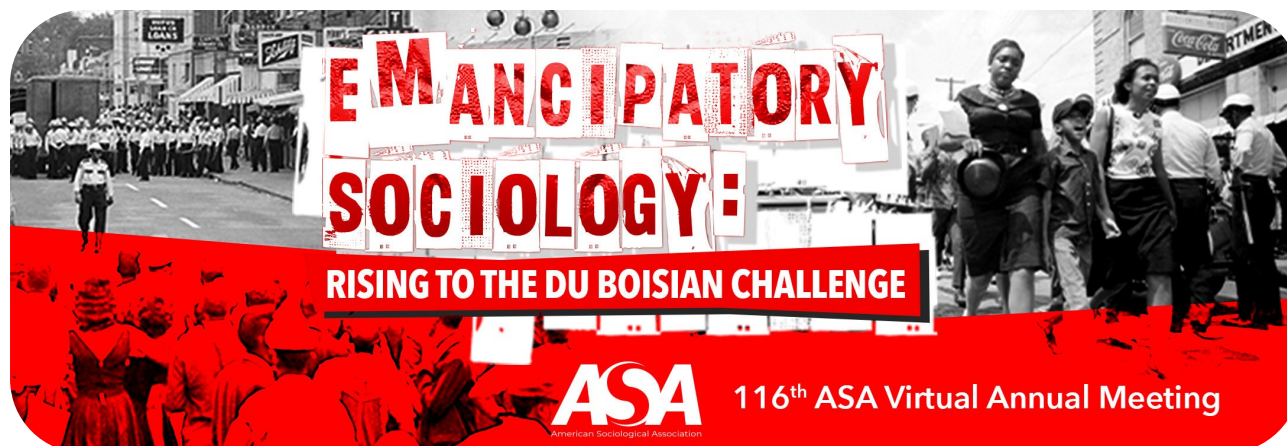
Third, the annual **ASA and SALC elections** will take place later this spring. Be on the lookout for an email from ASA with instructions on how to cast your ballot. I want to thank our Past Chair Toni Calasanti and the rest of the nominations committee (Ronica Rooks, Allen LeBlanc, Steve Hitlin, and Andrea Willson) for putting together a stellar slate of candidates for SALC council. The candidate bios are on pages 4-6.

Fourth, there are few days left to **nominate yourself or someone else for a 2021 SALC award**. Please do so! We have three awards this year: Outstanding Publication Award, Graduate Student Paper Award, and Outstanding Mentor Award. Nominations are due by March 1. For more information and submission instructions, see the [SALC webpage](#) or the fall 2020 SALC newsletter.

Lastly, a reminder....**please renew your ASA and SALC membership!** Thanks to everyone who has already renewed. We want our membership rolls above 600 so we can have many session slots for the 2022 annual conference (that seems so far away!). Consider gifting a membership to a colleague or a graduate student. To do so, log in using your ASA ID, enter the person's name, and pay with a credit card. You can sponsor multiple persons at once. Do note that student gift memberships can only be made before July 31. So please gift early and often!

I hope you enjoy the reminder of the newsletter. It contains announcements and news from our members as well as our regular features of Emerging Scholars and Journal Showcase. A big thanks to our newsletter editors, Shannon Shen and Stephanie Ureña, for keeping us informed in these beautiful newsletters.

Jennifer Karas Montez  
Chair, ASA Section on Aging and the Life Course



## 2021 SALC Program Section Day: Sunday, August 8

### ***Open Session: Aging and the Life Course at a Time of Multiple Crises***

#### ***\*\*Flash Talks\*\****

Organized by: Ynesse Abdul-Malak, Colgate University; Fumilayo Showers, University of Connecticut

### ***Open Session: Geography and Health Across the Life Course***

Organized by: Irma Elo, University of Pennsylvania

### ***Refereed Roundtables and Research Working Groups***

Organized by: Bridget Goosby, The University of Texas at Austin; Stephanie Ureña, The University of Maryland

### ***Matilda White Riley Lecture***

Our recipient of the 2019 Matilda White Riley Distinguished Scholar Award, Merril Silverstein (Syracuse University), will deliver the lecture.

## Save the Date for the 2021 Virtual SALC Mentoring Events!

In place of our in-person mentoring dinner, SALC is hosting two mentoring events in the spring. These events will be held on **Friday, April 9**, and **Friday, May 14**, from 4:00—5:00 pm (Eastern). Details will be sent prior to the events. Mark your calendars and stay tuned to the listserv for more information. We look forward to seeing you there!

## An Important Note from the ASA Meetings Team about the 2021 Virtual Conference Format

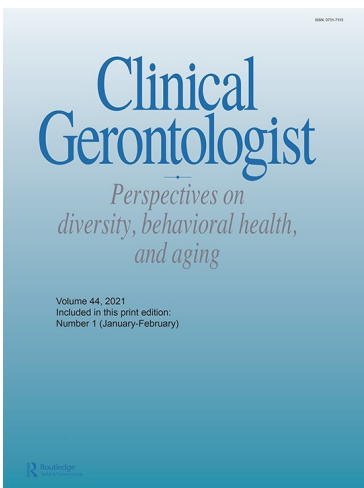
We will retain many of the best parts of an in-person meeting and introduce some engaging new virtual approaches. First and foremost, we are pleased to **present a full program without any reduction in the number of sessions offered** at the in-person meeting. The sessions will be rich and varied in content and type, with many focused on President Aldon Morris' [theme](#) "Emancipatory Sociology: Rising to the Du Boisian Challenge." Many other exciting [invited sessions](#) have already been announced.

We have **designed shorter, 85-minute time slots** to reflect what we have learned is most effective for virtual engagement and to maintain the standard five-day meeting schedule. These shorter sessions will ensure that programming fits within reasonable hours for people in different time zones, many of whom will be balancing caregiving while participating in the meeting.

**All sessions at the meeting will use Zoom rooms provided by ASA,** contributing to consistency and ease of participation. To support a secure environment, only registrants will be able to join a session or meeting. Additionally, Zoom technology allows us to increase accessibility with features such as auto-transcription and screen reader compatibility.

All sessions and meetings will be accessed via the ASA online program and **ONLY registered participants will be able to join a session.**

## Journal Showcase



**Clinical Gerontologist: Perspectives on Diversity, Behavioral Health, and Aging** (Taylor & Francis) presents original research, reviews, and clinical comments focusing on behavioral health of older adults. We have a particular interest in issues of diversity and disparities as they impact behavioral health of older adults. Published in cooperation with Psychologists in Long Term Care, the journal is designed for both researchers and practitioners.

*2019 Impact Factor*  
1.375

## Candidates for 2021 SALC Officers

The Nominating Committee of the Section on Aging and the Life Course has released its slate of candidates.  
**Candidates for Chair Elect**



### Hui (Cathy) Liu

**Present Position:** Professor of Sociology, Michigan State University; Founder and Director, MSU Family and Population Health Laboratory

**Education:** PhD, The University of Texas at Austin, 2008; MS, The University of Texas at Austin, 2007; MA, Nankai University, China, 2002; BA, Nankai University, China, 1999

#### Positions Held in ASA:

Section on Aging and the Life

Course: Council Member, 2016-2019; Graduate Student Paper Award Committee, 2018. Section on Medical Sociology: Council Member, 2017-2019; Leo G. Reeder Award Committee, 2019; Louise Johnson Scholar Award Committee Chair, 2019; Howard B. Kaplan Memorial Award Committee Chair, 2018; Simmons Award Committee, 2018 (chair) & 2019. Editorial Board Member, American Sociological Review, 2016-2018. Editorial Board Member, Journal of Health and Social Behavior, 2011-2013 & 2019-2021.

#### Publications:

Liu, Hui, Ning Hsieh, Zhenmei Zhang, Yan Zhang and Kenneth Langa. 2020. "Same-Sex Couples and Cognitive Impairment: Evidence from the Health and Retirement Study." *Journal of Gerontology: Social Sciences*. gb202. doi: 10.1093/geronb/gbaa202

Liu, Hui, Shannon Shen, and Ning Hsieh. 2019. "A National Dyadic Study of Oral Sex, Relationship Quality and Well-being among Older Couples." *Journal of Gerontology: Social Sciences* 74(2):298-308.

Liu, Hui, and Lindsey Wilkinson. 2017. "Marital Status and Perceived Discrimination among Transgender People." *Journal of Marriage and Family* 79(5): 1295-1313.

Liu, Hui, Linda Waite, Shannon Shen and Donna Wang. 2016. "Is Sex Good for Your Health? A National Study on Partnered Sexuality and Cardiovascular Risk Among Older Men and Women." *Journal of Health and Social Behavior* 57(3): 276-296.

Liu, Hui and Debra Umberson. 2015. "Gender, Stress in Childhood and Adulthood, and Trajectories of Change in Body Mass." *Social Science & Medicine* 139: 61-69.

**Personal Statement:** I am thrilled to be nominated to serve as SALC Chair-Elect. My work is primarily guided by the aging and life course perspective to study how marriage and family processes are linked to individuals' health and well-being. Having been a member of ASA and SALC since graduate school, I am deeply grateful to the section for providing invaluable resources and network support throughout my academic career. I would be honored to have the opportunity to contribute my efforts to promote the continued success of SALC. As Chair, I would explore new ways of leading SALC to thrive through the pandemic and post-pandemic periods. In particular, I would focus on promoting member engagement in virtual meetings, expanding membership, mentoring junior colleagues, and facilitating post-pandemic transitions. The Covid-19 crisis has created serious challenges for our families, societies and professions around the world but it also provides new opportunities for aging and life course research. As Chair, I would spare no effort to ensure SALC to continue to thrive under these transitional circumstances.



### Stefanie Mollborn

**Present Position:** Professor of Sociology and Interim Director, Institute of Behavioral Science University of Colorado Boulder

**Education:** PhD, Stanford University 2006; MA, Stanford University 2000; BA, Harvard University 1997

#### Positions Held in ASA:

Deputy editor, Social Psychology Quarterly, 2021-2023; ASA Honors Program advisory board, 2020-2022; Program committee, Social Psychology section, 2020-2021; Section chair, Children and Youth section, 2017-2018; Chair, Outstanding Publication Award committee, Section on Aging and the Life Course, 2015-2016

**Publications:**

Mollborn, Stefanie. 2017. *Mixed Messages: Norms and Social Control around Teen Sex and Pregnancy*. New York: Oxford University Press.

Mollborn, Stefanie, Katie Holstein Mercer, and Theresa Edwards-Capen. In press. "Everything is Connected": Health Lifestyles and Teenagers' Social Distancing Behaviors in the COVID-19 Pandemic." *Sociological Perspectives*.

Mollborn, Stefanie, Paula Fomby, Joshua A. Goode, and Adenife Modile. Published online ahead of print. "A Life Course Framework for Understanding Digital Technology Use in the Transition to Adulthood." *Advances in Life Course Research*. <https://doi.org/10.1016/j.alcr.2020.100379>

Mollborn, Stefanie, Bethany Rigles, and Jennifer A. Pace.

Published online ahead of print. "Healthier Than Just Healthy": Families Transmitting Health as Cultural Capital." *Social Problems*. Accessible at <https://academic.oup.com/socpro/advance-article/doi/10.1093/socpro/spaa015/5827866?searchresult=1>. DOI: 10.1093/socpro/spaa015

Mollborn, Stefanie, Elizabeth M. Lawrence, and Robert A. Hummer. 2020. "A Gender Framework for Understanding Health Lifestyles." *Social Science & Medicine* 265 (November): 113182. <https://doi.org/10.1016/j.socscimed.2020.113182>

**Personal Statement:** I appreciate this nomination. A longtime SALC member, I am a big fan of our section and its inclusiveness in age ranges and in terms of emphasizing theory versus policy and practice. I have previously chaired the Children and Youth section and enjoyed the job. Post-pandemic, building community and cohesion will be an important goal for the section, as will reaching out to recruit new members. Note that next year I will be moving to a faculty job in Sweden but remaining an ASA member and conference attendee.



## Candidates for Council

There are four candidates for two slots on the Council. The 3-year term begins in 2021.



### C. Andre Christie-Mizell

**Present Position:** Vice Provost for Graduate Education; Dean of the Graduate School; Director, Office of Postdoctoral Affairs; Centennial Professor of Sociology, Vanderbilt University

**Personal Statement:** It is a privilege to be nominated for the SALC Council. My research focuses on how family functioning, social roles, and identity shape the psychological well-being and health over the life course. I am particularly interested in health inequality and how race and gender differences in outcomes manifests at particular life stages (e.g., the transition from adolescence to young adulthood). I am grateful for the many years that my students and I have benefitted from intellectual engagement with SALC. I would be honored to have the opportunity to contribute to the continued success of the section.



### Teresa (Terri) Cooney

**Present Position:** Professor and Chair, Department of Sociology, University of Colorado Denver

**Personal Statement:** I have been a member of ASA for over 30 years. During my career, I have served ASA as newsletter editor and Nominations Committee Chair in the Family Section, as well as engaging in SALC as a member on the Outstanding Publication Committee (2010; 2019), Outstanding Graduate Student Paper Committee (2012), Matilda White Riley Distinguished Scholar Award Committee (2013), and as a Council Member (2010-13). My research examines the consequences of demographic changes for adult family relationships, focusing primarily on how population aging and high divorce rates have shaped family interdependencies, such as care to aging parents, parents' support to and relations with adult offspring, and grandparents' support to grandchildren in diverse family forms. SALC has always been the ASA section that offers me the most valuable benefits and opportunities and I would be honored to serve the section as a council member. Thinking of all SALC does, I would like council to explore ways to expand engagement in the section by international researchers (which we have learned how to do remotely in the past year!) and to establish on-going mentoring relationships between student/junior members of the section and more established section members who share their interests. Here too many opportunities exist for maintaining such connections remotely. Initiatives like these will benefit individual members, as well as grow the section and retain our members.



### Anna Muraco

**Present Position:** Professor and Department Chair, Sociology Department, Loyola Marymount University in Los Angeles

**Personal Statement:** I'm delighted and honored to be nominated for the SALC Council. As a faculty member at a primarily undergraduate university focused on teaching, I value colleagues outside of my institution for intellectual companionship on topics of aging and the lifecourse. Since the time I was a Postdoctoral Fellow with the NIA-sponsored Applied Issues in Aging program at University of Michigan, my research primarily has focused on the aging experiences of older LGBT adults in terms of family life, importance of pets, and social support; for many years I also co-authored articles on mental and physical health in my capacity as a collaborator with an NIA-sponsored research team at the University of Washington. My next project, which is paused due to Covid-19, is an interview study with Older Latinx Immigrants' experiences of aging and social support. With this nomination, I would be honored to serve as an at-large Council member so that I can serve the discipline and particularly, SALC, and represent faculty from primarily undergraduate institutions.

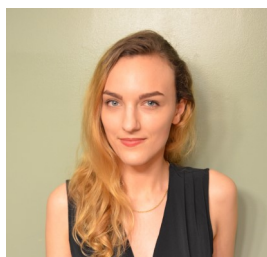


### Karen Lutfey Spencer

**Present Position:** Professor, Department of Health and Behavioral Sciences, University of Colorado Denver

**Personal Statement:** It is an honor to be nominated for the SALC council. My research is on medical decision making over the life course, health disparities, and the ways individuals interact with healthcare systems. I have examined these issues across various medical and psychiatric conditions such as diabetes, coronary heart disease, schizophrenia, and depression. My current work is focused on the social context of end-of-life decision making, including the ways in which healthcare systems, payers, providers, and social networks influence individuals' engagement with hospice and other healthcare services. Having benefitted tremendously from ASA networking and mentorship throughout my career, I welcome an opportunity to contribute to the future growth and success of SALC.

## Nominees for SALC Student Representative



### Vesna Pajovic

**Present Position:** Doctoral Candidate in Sociology at Western University (Ontario)

**Personal Statement:** As a doctoral candidate in the Department of Sociology at Western University, my research broadly examines employment across the life course, long-term change in precarious and insecure employment, gender- and sexuality-based labor market stratification, the work/health relationship, and quantitative longitudinal methods. My doctoral dissertation investigates how employment trajectories have changed across cohorts from the 1960s to the present day using theory on life course de-standardization and the sociology of risk, longitudinal multi-cohort data from the Panel Study of Income Dynamics (PSID), and sequence analysis. My research is inspired and driven by methodological developments within life course sociology, particularly in terms of trajectory modelling techniques. My collaborative

work includes a study on the relationship between work-limiting disabilities and wealth across the life course using longitudinal data from the PSID. This study is part of a larger scale project examining how social and environmental factors relate to the inter-generational transmission of health outcomes. In another multi-study collaborative project, I help advance quantitative research on lesbian, gay, and bisexual (LGB) employment in the Canadian context, investigating gender- and sexuality-based disparities in wages, poverty, and labour force participation. Within this collaboration I have also undertaken a leading role investigating LGB self-employment.

I am honoured to have been nominated to for SALC student representative. If elected, I am eager to contribute my skills and past experience towards practical solutions in the context of increased social distance and online interaction. As in previous positions, I am also committed to equity, diversity, and inclusion initiatives, particularly to benefit racialized and sexual minority students. My past experience includes many positions throughout my graduate studies at Western and my undergraduate years at the University of British Columbia. My most recent positions in 2020-21 include councillor for Western's Society of Graduate Students, deputy chairperson of the Western Sociology Graduate Student Association, and editor for the Western graduate sociology journal. In my various positions I have facilitated and organized events and workshops, helped secure scholarship funds and resources for student researchers, and acted as student representative and liaison between students and the wider department/faculty. Thank you for considering my candidacy!



### Melanie Z. Plasencia

**Present Position:** Ph.D. Candidate in Ethnic Studies at The University of California, Berkeley

**Personal Statement:** I am a PhD candidate in Comparative Ethnic Studies at the University of California, Berkeley. My research contributes to theories of immigration and adaptation, social networks and poverty and inequality research by incorporating the aging experiences of older immigrants from Latin America and the Hispanic-Caribbean. My research is committed to improving older immigrants' social, economic, and health conditions by learning about the role social support and place have in shaping their health and well-being. Specifically, I have spent my academic career examining older Latinos through an ethnographic lens to understand how they develop strategies to confront extreme forms of health and economic disparities as they age.

As an undergraduate, I wrote my senior thesis on a nearby senior day center in Perth Amboy, New Jersey, and the role of culture in retaining and providing social engagement for older Latinos. Moreover, I developed a short documentary on my grandmother's challenges learning to adapt to technology and social media, which can be viewed on YouTube. My dissertation project, *Aging on The Hudson: How Older Latino Immigrants Confront Inequality in Later Life*, shows that older Latino immigrants face enormous financial, familial, medical, and health challenges when they decide to grow old in the United States. These challenges emerge from structural discrimination, such as race, ethnic and age discrimination that impede senior social mobility. As a result, Latino immigrant seniors must learn new ways of managing healthcare, adapting to fixed incomes, and finding spheres of personal and even moral worth in their retirement years.

In *Aging on the Hudson*, I draw on more than two years of ethnographic fieldwork in a community of older Latinos on the East coast, visiting senior centers, churches, libraries, and nursing homes, as well as 72 open-ended interviews. Drawing on sociological and feminist methodologies, I posit that poverty, deteriorating health, and diminishing government support pose fundamental challenges to aging Latino immigrants and illustrate how they, in turn, attempt to overcome them by forging networks of support. This project has been supported by a multi-year University of California (UC) fellowship, the New York Metro Fellowship, the Institute for the Study of Societal Issues, UC Berkeley's Center for Race and Gender, and the Ford Foundation.

As a scholar of race and ethnicity in the field of aging, I would be excited to join the SALC leadership team as your student representative. When I became a member three years ago, I found friends, collaborators, and mentors in our section. As your student representative, I would have three primary goals: 1) foster a virtual community for members by hosting writing sessions, check-ins, and workshops; 2) discuss and implement ways to encourage more racial and ethnic minorities to join our section; and 3) retain our present membership by involving students in intellectual exchanges beyond our annual conferences and meetings. At UC Berkeley, I have worked on a mentorship program called Gigs that pairs 50 undergraduate students with graduate students. I want to take the expertise I have gained in this program to support SALC's efforts to mentor and engage up-and-coming scholars in the section. Being your SALC representative would be an honor. I would very much look forward to working with you to build a community that supports our mission to advance aging and the life course in scholarship and practice.

## Emerging Scholar



### Duygu Basaran Sahin

PhD Candidate

Department of Sociology, CUNY Graduate Center

E-mail: [dbasaransahin@gradcenter.cuny.edu](mailto:dbasaransahin@gradcenter.cuny.edu)

Twitter: @basaranduygu

Website: <https://gc-cuny.academia.edu/DuyguBasaranSahin>

I am a PhD Candidate in the sociology doctoral program at the CUNY Graduate Center and a demography fellow at the CUNY Institute for Demographic Research (CIDR). Broadly, my academic interests include race/ethnicity, aging, and social inequality.

I joined SALC during Deborah Carr's tenure as chair. After discovering in the business meeting that SALC did not have a Twitter account, I volunteered to create and manage SALC's Twitter account. I love this job! At the expense of sounding like a broken record, I encourage all of our members to follow @ASA\_SALC and tag us when you have an academic announcement.

Aging and the socioeconomic issues of older adults, in and outside of academia, have always interested me. I produced my first academic work on aging for my master's thesis, which examined the birth and development of Turkish social policies regarding older people, specifically governmental approaches to housing and care initiatives for older adults. I focused on the creation of public nursing homes in Turkey and conducted open-ended interviews with nursing home residents. I then worked for several years before starting my doctoral studies. My job at an advocacy organization based at the United Nations taught me that we have a long way to go to convince governments that older people deserve as much protection as children from abuse, malpractice etc. Since the start of my doctoral studies, I have explored different aspects of inequality among the older population, such as racial and ethnic differences in mortality and family poverty.

During my doctoral studies, I received a multi-year demography fellowship at CIDR, which came with a research apprenticeship and thorough training in methods of demographic analysis. I have had the privilege of working with excellent mentors in a multidisciplinary environment. Frank Heiland, an economics professor at Baruch College, and I analyzed data from the National Longitudinal Mortality Study and published our research on Black-White mortality differentials in old age in *Applied Demography and Public Health in the 21st Century*. With my second mentor, Professor Richard Alba, I conducted research on mixed-race children in the U.S. using IPUMS data. We published this research in *The Annals of the American Academy of Political and Social Science* and *Journal of Ethnic and Migration Studies*. Richard Alba currently chairs my dissertation committee.

My dissertation examines employment and changes in employment types (full time, self-employed etc.) among older workers in the Great Recession (GR). I use data from the Health and Retirement Study to investigate the demographic, socioeconomic, and employer-related (i.e. perceived age discrimination in the workplace) factors that might have affected older workers' employment transitions following the GR. I ask questions such as, what were the determinants of a transition from a full-time to a part-time job or from working for someone else to being self-employed among older workers? I draw upon intersectionality and cumulative dis/advantage theories to explain the experiences of subpopulations, such as older women of color. I also explore how life satisfaction among older adults changed in relation to the GR and look into what role, if any, employment and employment transitions played in changes in older adults' life satisfaction.

Regardless of their origin, whether economic in the case of the Great Recession or public health in the current pandemic, crises ironically provide important opportunities to illuminate where social and economic inequalities exist and how they reveal themselves. For future research, I am interested in exploring how the public health and economic crisis caused by Covid-19 has affected other aspects of older adults' lives (e.g. employment, housing), in addition to excruciating mortality rates.

I try my best to live a balanced life. Recently, enjoying life involves baking with unconventional ingredients, such as white beans, or trying out new online workouts. I also joined a virtual book club for the first time in my life. I have a toddler and a preschooler and with the nearest family living more than 5000 miles away, I am often busy helping tiny bodies with big emotions.

**Send nominations for Emerging Scholars to:**  
**Jennifer Karas Montez, SALC Chair**  
**[jmontez@maxwell.syr.edu](mailto:jmontez@maxwell.syr.edu)**

## Five Questions for Ynesse Abdul-Malak



**Ynesse  
Abdul-Malak**

**Hometown?** I grew up in a small picturesque village, Camp-Coq, in northern Haiti. I spent a lot of time swimming in a beautiful river that ran through the village.

**Proudest Accomplishment?** My proudest professional accomplishment is getting a PhD since I'm a first generation college student. Getting a PhD was never part of my equation, in fact, I'm not sure I even knew what a PhD was until my 20's.

**Your first-ever job?** My first job after graduating HS was working at the famous Nathan's Hot Dog in Coney Island, Brooklyn, NY

**A surprising fact about yourself?** I am a dual citizen of two countries and not of my birthplace. Haitians have to renounce their Haitian citizenship in order to adopt another one. I'm a naturalized US citizen and also obtained a Lebanese citizenship through marriage and when I lived in Lebanon.

**Best piece of professional advice you've ever received?** The best professional advice I have gotten is to place family before work. While I was working on my PhD, my kids were small. It was very challenging navigating my domestic and graduate school duties. My kids' breaks from school were not always in sync with mine. During one of the kids' winter breaks, I was torn between traveling with the kids to a warm place (we live in Syracuse, one of the snowiest places in continental US) or hire a babysitter while I continue working. I was discussing my dilemma with my PhD advisor and she told me, "people on their death beds seldom regret not spending more time at work, but they have regrets of not spending enough time with their loved ones, especially their children." I made arrangement for my TA duties and we travelled to a warm place.

## News & Announcements

### Call for Book Proposals

#### Sociology of Ageing: Emerald Publishing's Sociology Books Programme

Contact: Katy Mathers (kmathers@emerald.com)

Attention researchers working in the field of the sociology of ageing! Do you have plans to write a monograph or curate an edited collection? Having identified the sociology of ageing as a key sub-discipline and growth area here at Emerald, we're currently seeking proposals for books and series in this field.

Our book proposal form may be accessed [here](#). To submit a proposal, or if you'd prefer a more informal chat to discuss your research, please [get in touch](#) with our Books Commissioning Editor for Sociology, Katy Mathers. You can also [watch this 1-minute video and meet her virtually](#).

At Emerald Publishing, we are continuing to build our award-winning books programme, and we are keen to develop our sociology program to offer something of real value and originality. You can read more about publishing with us [here](#).

### SALC Members: New Positions

**Elizabeth Cooksey** was made a Fellow of the American Association for the Advancement of Science (AAAS).

**Stephanie Ureña** ([surena@umd.edu](mailto:surena@umd.edu)) is now a Postdoctoral Associate at the University of Maryland School of Public Policy (College Park). She is working with Dr. Katrina Walsemann (Associate Professor & Roger C. Lipitz Chair in Health Policy) on her R01 and Alzheimer's Association grants. These projects examine state- and local-level variation in educational contexts using historical records that will be linked to the Health and Retirement Study to examine how individuals' early educational experiences translate into dementia risk in later life.



## News & Announcements

### Section Member Books

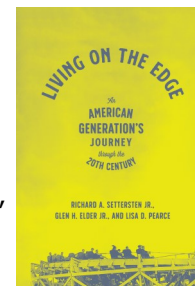
#### **Living on the Edge: An American Generation's Journey through the Twentieth Century**

Richard A. Settersten, Jr., Glen H. Elder, Jr., and Lisa D. Pearce  
University of Chicago Press

Based on lifelong data drawn from the iconic Berkeley Guidance Study, the book tells the story of the rarely studied 1900 generation. Set against a century of revolutionary change, the book traces the 1900 generation's social origins through education, marriage and childbearing, employment, and their later years. From the reorganization of marriage and family roles and relationships to strategies for adapting to a dramatically changing economy, the challenges faced by this generation echo our own time. Their experiences with rapid social change and disruption provide remarkable insights into life as we know it today.

<http://livingontheedgebook.com/>

<https://press.uchicago.edu/ucp/books/book/chicago/L/bo68652394.html>

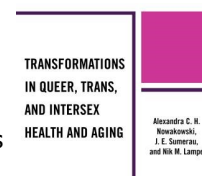


#### **Transformations in Queer, Trans, and Intersex Health & Aging**

Alexandra C. H. Nowakowski, J. E. Sumerau, and Nik M. Lampe  
Lexington Books

This book utilizes collaborative autoethnography to examine transformations in health and aging among queer, trans, and intersex people in society. To this end, the authors each utilize their lived experiences as queer, trans, and/or intersex people to discuss inequalities and norms in U.S. healthcare. Further, they elaborate upon some ways U.S. healthcare systems may become more inclusive of queer, trans, and intersex populations over time. In so doing, they utilize the autoethnographic cases to illustrate and describe the complexities of sex, gender, and sexualities in health and aging as well as the ways such intricacies facilitate societal inequalities in health and aging.

<https://rowman.com/ISBN/9781793616340/Transformations-in-Queer-Trans-and-Intersex-Health-and-Aging>



#### **Social Life in the Movies: How Hollywood Imagines War, Romance, Aging, Schools, and Social Inequality**

James J. Dowd  
Routledge

Section members might be interested in the chapter on aging, entitled "The Coming of Age: Older Characters in Hollywood Movies"

<https://www.routledge.com/Social-Life-in-the-Movies-How-Hollywood-Imagines-War-Schools-Romance/Dowd/p/book/9780367277161>

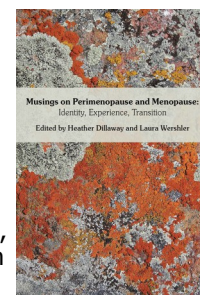


#### **Musings on Perimenopause and Menopause: Identity, Experience, Transition**

Heather Dillaway and Laura Wershler, Editors  
Demeter Press

While biomedical and feminist researchers agree that menopause is a time of transition and border crossing, they offer diverse viewpoints about whether perimenopause and menopause signal deficiency and burden, or growth and freedom, or both. So too, contributors to this collection—influenced by factors of age, cultural background, societal context, and physical and psychological experience—vary significantly in their perspectives of this process. Research, analysis, narrative, poetry, and art intermingle to create a multi-textured montage that challenges stereotypes, probes relationships, and defies categorization. Musings on Perimenopause and Menopause: Identity, Experience, Transition, provides insight into how women think about and experience the transition to menopause in contemporary times.

<https://demeterpress.org/books/musings-on-perimenopause-and-menopause-identity-experience-transition/>



# News & Announcements

## Section Member Publications & Grants

- Bhatta, T. R., Kahana, E., Lekhak, N., Kahana, B., & Midlarsky, E. 2021. Altruistic Attitudes Among Older Adults: Examining Construct Validity and Measurement Invariance of a New Scale. *Innovation in Aging*, 5 (1). <https://doi.org/10.1093/geroni/igaa060>
- Blackwell, Rebecca, and William Force. 2020. "Donileen Loseke," in *SAGE Research Methods Foundations*, edited by P. Atkinson, S. Delamont, A. Cernat, J. Sakshaug, and R. Williams. doi:10.4135/9781526421036896556
- Byers, Megan D., Nicholas V. Resciniti, Stephanie Ureña, Katherine Leith, Monique J. Brown, Nik M. Lampe, and Daniela B. Friedman. 2021. "[An Evaluation of Dementia Dialogues®: A Program for Informal and Formal Caregivers in North and South Carolina](#)." *Journal of Applied Gerontology*.
- Cheadle, Jacob E., Bridget J. Goosby, et al. 2020. "Race and Ethnic Variation in College Students' Allostatic Regulation of Racism-Related Stress." *Proceedings of the National Academy of Sciences* 117: 31053-31062. [www.pnas.org/cgi/doi/10.1073/pnas.1922025117](http://www.pnas.org/cgi/doi/10.1073/pnas.1922025117)
- Donnelly, Rachel, and Mateo P. Farina. 2021. "How Do State Policies Shape Experiences of Household Income Shocks and Mental Health during the COVID-19 Pandemic?" *Social Science & Medicine*. <https://www.sciencedirect.com/science/article/abs/pii/S0277953620307760>
- Jelsma, Elizabeth, Bridget J. Goosby, and Jacob Cheadle. 2021. "Do Trait Affective Characteristics Moderate Sympathetic Arousal to Interpersonal Discrimination Exposure in a Natural Setting?" at *Psychophysiology*. doi:10.1111/psyp.13763
- Kahana, E., Bhatta, T. R., Kahana, B., & Lekhak, N. 2021. Loving Others: The Impact of Compassionate Love on Later-Life Psychological Well-being. *The Journals of Gerontology: Series B*, 76(2), 391-402. <https://doi.org/10.1093/geronb/gbaa188>
- Lampe, Nik M., and Alexandra C. H. Nowakowski. 2020. "New Horizons in Trans and Non-Binary Health Care: Bridging Identity Affirmation with Chronicity Management in Sexual and Reproductive Services." *International Journal of Transgender Health*. <https://doi.org/10.1080/26895269.2020.1829244>
- Liao, Tim. 2021. "Using Sequence Analysis to Quantify How Strongly Life Courses Are Linked." *Sociological Science* <https://sociologicalscience.com/articles-v8-3-48/>
- Quashie, N.T., Davis, J.G.M., Willie-Tyndale, D., James, K. and Eldemire-Shearer, D. (2021). "Gender Differences in Grandparent Caregiving and Life Satisfaction of Older Jamaicans", [Claster, P.N.](#) and [Blair, S.L.](#) (Ed.) *Aging and the Family: Understanding Changes in Structural and Relationship Dynamics (Contemporary Perspectives in Family Research, Vol. 17)*, Emerald Publishing Limited, pp. 97-121. <https://doi.org/10.1108/S1530-353520210000017006>
- Torres, Stacy and Griffin Lacy. 2021. "Life Course Transitions, Personal Networks, and Social Support for LGBTQ+ Elders: Implications for Physical and Mental Health," Allen J. Le Blanc and Brea L. Perry (Eds.) *Sexual and Gender Minority Health (Advances in Medical Sociology, Vol. 21)*, Emerald Publishing Limited: 157-179. <https://doi.org/10.1108/S1057-629020210000021012>
- Torres, Stacy and Erica Torres. 2020. "Healthcare Bias and Discrimination." *Contexts* 19 (4): 96. <https://journals.sagepub.com/doi/full/10.1177/1536504220977953>.
- Torres, Stacy. 2020. "Shopping for a Nursing Home in a Pandemic." Op-Ed. *The New York Times*. 12/23. <https://www.nytimes.com/2020/12/23/opinion/nursing-home-assisted-care-pandemic.html>
- Torres, Stacy. 2020. "Building Trust Across Communities." Ask the Expert: How Can We Be Sure the New Covid-19 Vaccines Are Safe? *UCSF Magazine*. 12/8. <https://www.ucsf.edu/magazine/covid-vaccine-safety>
- Torres, Stacy and Andrew Penner. 2020. "Nurses Are Crucial to the Pandemic Response. Why Aren't They on Biden's COVID-19 Board?" Op-Ed. *The Los Angeles Times*. 11/23. <https://www.latimes.com/opinion/story/2020-11-23/nurses-biden-covid-advisory-board>
- Torres, Stacy. "Celebrating Día de Los Muertos in the Time of COVID-19." Op-Ed. *San Francisco Chronicle*. 11/2. <https://www.sfchronicle.com/opinion/openforum/article/Celebrating-D-a-de-Los-Muertos-in-the-time-of-15693070.php>
- Torres, Stacy. "Isolation Kills, Especially Seniors. Community Spaces Can Be a Vaccine for COVID Loneliness." Op-Ed. *USA Today*. 10/20. <https://www.usatoday.com/story/opinion/2020/10/20/covid-19-loneliness-isolation-can-kill-elderly-dementia-column/3711431001/>.
- Weitzman, Abigail and Bridget J. Goosby. 2021. "Intimate Partner Violence, Non-Communicable Disease, and Circulating Glucose: Adding Insult to Injury?" *Social Science and Medicine- Population Health* 13. <https://doi.org/10.1016/j.ssmph.2020.100701>
- Xu, Hongwei. 2021. "Grandparenting and Cognitive Functioning in China." *Population Research and Policy Review*. doi:10.1007/s11113-020-09628-1.

**Grant awarded:** Lampe, Nik M. Support to Promote Advancement of Research and Creativity (SPARC) Graduate Research Grant Program. 2021. Office of the Vice President for Research, University of South Carolina. "Healthy Aging Beyond Sex and Gender Binaries." Funding period: May 1, 2021 - July 31, 2022. PI: \$5,000.

## News & Announcements

### Data Releases

#### NLSY79 Announces Release of Round 28 Data

The National Longitudinal Survey of Youth 1979 (NLSY79) announces the release of its Round 28 data. The NLSY79 is a longitudinal study that has followed the lives of a sample of U.S. youth born between 1957-64 for more than 40 years. The cohort originally included 12,686 respondents ages 14-22 when first interviewed in 1979. In round 28 (2018), respondents are ages 54-62. The study's regular content on families, work, income, assets, and health have been expanded in Round 28 with new aging-related topics like financial literacy, retirement expectations and plans, estate planning, chronic pain, prescription painkiller use, caregiving, workplace accommodations and more. For access to the study data, codebook, and other documentation, please visit: <https://www.nlsinfo.org/content/cohorts/nlsy79>

The NLSY79 is a rich resource for life course research, especially explorations of the long-term consequences of social background, education, incarceration, employment and family characteristics. The data also are ideally suited for *intergenerational analyses* when linked with its companion study, the NLSY79 Child and Young Adult (CYA) cohort. The CYA cohort is composed of all children born to NLSY79 women. To date, more than 11,000 children of the NLSY79 mothers have been interviewed over a 30+ -year span.

The NLSY data also are ideal for exploring *cohort differences* in life course experiences. The NLSY79 can be linked with the NLSY97, which has tracked a U.S. cohort born between 1980-84. At the 1997 baseline, the nearly 9,000 respondents were ages 12-17. As of the latest round of data collection (Round 18, 2017-18), study participants were ages 33-38. For further information on the NLSY surveys, please see <https://www.nlsinfo.org/> or contact:

NLSY79 PI: Deborah Carr (carrds@bu.edu).  
NLSY79-CYA: Elizabeth Cooksey (cooksey.1@osu.edu)  
NLSY97: Lowell Taylor (LT20@andrew.cmu.edu)

#### Music Across the Life Course Project

Joe Kotarba is Director of the Music Across the Life Course Project in the Department of Sociology at Texas State University. The current focus is on musical experiences shared across the life course, for example, music as a source of meaning for the COVID-19 pandemic. Contact Joe at: [jk54@txstate.edu](mailto:jk54@txstate.edu).

### Job Announcement

The **Icahn School of Medicine at Mount Sinai** is seeking applicants for a **two-year post-doctoral Research Fellowship with a focus on Older Vulnerable Adult Populations** beginning in July 2021.

The overarching goal of this postdoctoral research-training program is to launch the careers of a new generation of researchers who are prepared to apply a multidisciplinary approach to research at the intersection of geriatric medicine and vulnerable populations.

Launched in 2020, the training program recruits two new postdoctoral scholars each academic year. Over 20 faculty researchers and a large team of research staff support the efforts and learning of trainees. All fellows will conduct mentored research and will be eligible to earn an MPH, MS, or PhD in research. Stipend and tuition are provided along with an allowance for travel and research expenses.

Research foci include behavioral medicine, psycho-social research, mind-body and integrative interventions, health disparities, health systems, palliative care, and more.

Eligible candidates will have an MD, DO, PhD or equivalent doctoral degree and a demonstrated commitment to a research career that focuses on older adult populations. This fellowship is being offered jointly through the Division of General Internal Medicine, and the Brookdale Department of Geriatrics and Palliative Medicine at the Icahn School of Medicine at Mount Sinai with rolling admissions.

Please visit our [website](#) to apply.



# News & Announcements

## Call for Chapter Proposals

### Call for Chapter Proposals for Global Agenda for Social Justice 2022 An Official Publication of the Society for the Study of Social Problems Proposals due April 1, 2021 - Chapters due August 1, 2021

Since 2004, the Society for the Study of Social Problems (SSSP) has published eight volumes of the **Agenda for Social Justice**. Work is now beginning for the ninth iteration of the publication—**Global Agenda for Social Justice: Solutions 2022**, which is designed to inform the public-at-large about the world's most pressing social problems and to propose feasible, evidence-based public policy solutions. This project affirms the commitment of the SSSP to social justice scholarship, and enables scholars to communicate on significant social issues worldwide. This volume will be an "agenda for social justice," that contains recommendations for action worldwide by public officials, policy makers, and the public. The volume is published by [Policy Press](#), an academic publisher at the University of Bristol, UK. The volume will convey the most valid and reliable knowledge available about global social problems, and while anyone is free to contribute regardless of SSSP membership, we enthusiastically welcome the collaboration of SSSP members and Divisions. Please consider preparing a chapter for the 2022 publication. We ask you, individually or with colleagues, to submit a brief proposal (1-2 pages) identifying a significant social problem of concern worldwide, and respond to the following items:

- *Identify and define a concrete social problem of international/global scope.*
- *Each proposal should then have three sections answering each of the following questions:*
  - *What do we know about the problem (i.e., what is the definition and extent of the problem)?*
  - *How do we know this information (i.e., what are the sources of data about this problem)?*
  - *In terms of policy and social action, what are proposals to alleviate the problem (i.e., what are achievable solutions for reducing, mitigating, solving, or abolishing the problem)?*

The editors of this volume invite interested participants to prepare draft statements for proposed contributions to the 2022 publication. Please submit a copy of your proposal via email (as specified below) to each of the committee members by April 1, 2021. Final contributions will be limited to 3000 words (or roughly ten double-spaced manuscript pages). Chapter drafts will be due August 1, 2021, and final manuscripts will be due December 1, 2021. The volume will launch concurrent with the 2022 SSSP annual meetings. All are welcome to email the editors for any clarification.

Glenn Muschert (chair), Khalifa University of Science & Technology, [glennmuschert@gmail.com](mailto:glennmuschert@gmail.com)

Kristen M. Budd, Miami University, [buddkm@miamioh.edu](mailto:buddkm@miamioh.edu)

Heather Dillaway, Wayne State University, [dillaway@wayne.edu](mailto:dillaway@wayne.edu)

David C. Lane, Illinois State University, [dclane@ilstu.edu](mailto:dclane@ilstu.edu)

Manjusha Nair, George Mason University, [mnair4@gmu.edu](mailto:mnair4@gmu.edu)

Jason A. Smith, Kaiser Family Foundation, [jasonsm55@gmail.com](mailto:jasonsm55@gmail.com)

For more info on **Agenda for Social Justice Projects**, see Robert Perrucci's presidential address "Inventing Social Justice" in the May 2001 issue of *Social Problems* [here](#). To review electronic copies of past volumes available for open access download at the following sites [here](#) and [here](#).

A note on COVID-19: Contributors may or may not wish to address the COVID-19 pandemic and response. Chapters speaking to COVID-19 are welcome, but authors should not feel compelled to address the pandemic, as the field of social problems is broader, more comprehensive, and more persistent than the current public health crisis.

Topics of interest include (but are not limited to):

- |  |  |                                      |
|--|--|--------------------------------------|
| • Agricultural and Food Policy           | • Global/Regional Governance             | • Pandemics/COVID-19                 |
| • Authoritarianism/Democratic Governance | • Globalization/Decoupling               | • Policing and Law Enforcement       |
| • #BLM Black Lives Matter                | • Green Economy/Sustainability           | • Population/Demographics            |
| • Children's Rights/Issues               | • Gun Violence/Rights/Control            | • New Media/Privacy/Surveillance     |
| • Class Conflict/Inequalities            | • Hate Crimes & Extremist Groups         | • Public Health                      |
| • Climate Change/CO2 Levels              | • Health Care Policy                     | • Racism/Ethnic Bias                 |
| • Corporate Regulation/Responsibility    | • Human Rights & Violations              | • Refugees/Asylum/Detention          |
| • Courts and Judicial Issues             | • Human Trafficking/Slavery              | • Religious Issues/Rights/Conflicts  |
| • Crime, Justice, Punishment             | • Immigration/Migration/Borders/Refugees | • Reproductive Rights                |
| • Disability Rights/Issues               | • Income Security/Social Security        | • Resource Extraction/Fossil Fuels   |
| • Drug Policy/Treatment/Enforcement      | • Indigenous Rights/Issues               | • Rule of Law/Civil Society          |
| • Economic Issues                        | • Internet/Digital Policy                | • Social Movements/Protests/Activism |
| • Education Issues                       | • Journalism and Freedom of Information  | • Sex Work & Sex Workers             |
| • Employment/Unemployment                | • Labor Rights/Issues                    | • Sexual Violence and Harassment     |
| • Disaster/Emergency/Crisis Management   | • LGBTQ+ Rights/Issues                   | • Social Welfare Systems             |
| • Energy Policy/Alternative Energy       | • Mass Violence, Genocide                | • Sustainable Development Goals      |
| • Environmental Policy/Issues/Conflicts  | • Militarization, War, Conflict          | • Terrorism & Radicalization         |
| • Family Rights/Issues/Policy            | • Minority Rights/Issues                 | • Trade Agreements/Fair Trade        |
| • Financial Systems/Global Finance       | • Nationalism/Isolationism/Xenophobia    | • Violence against Women             |
| • Foreign Policy/International Relations | • National and International Security    | • Women's Rights/Issues              |
| • Gender Equality/Rights/Issues          | • Nuclear Policy/Security                |                                      |



### Call for Announcements

Submit your announcements, recent publications, and other news to be included in our next newsletter!

Announcements for the Summer newsletter should be emailed by **June 2021** to co-editors Stephanie Ureña (surena@umd.edu) & Shannon Shen (sshenn@tamusa.edu)

You can peruse previous newsletters, read about your membership benefits, and more at our section website:

<http://asasalc.org/>

### We are on Facebook & Twitter!

Follow us to engage with the SALC community and be notified of the latest research, events, and job opportunities related to our section.

<https://www.facebook.com/groups/SALC.ASA/>

[https://twitter.com/asa\\_salc?lang=en](https://twitter.com/asa_salc?lang=en)



## Section on Aging and the Life Course

### Chair

Jennifer Karas Montez  
Syracuse University  
jmontez@maxwell.syr.edu

### Chair Elect

Merill Silverstein  
Syracuse University  
merrills@syrr.edu

### Past Chair

Toni Calasanti  
Virginia Tech  
toni@vt.edu

### Secretary/Treasurer

Dawn C. Carr  
Florida State University  
dccarr@fsu.edu

### Student Members

Catherine Garcia ('21)  
University of Southern California  
perezcat@usc.edu

Chrisse Edmunds ('22)  
University of Nebraska-Lincoln  
catherinegarcia@unl.edu

### Council

Patricia A. Thomas ('21)  
Purdue University  
pthomas4@purdue.edu

Mieke Beth Thomeer ('21)  
University of Alabama, Birmingham  
mthomeer@uab.edu

Jason Houle ('22)  
Dartmouth University  
Jason.houle@dartmouth.edu

Amélie Quesnel-Vallée ('22)  
McGill University  
Amelie.quesnelvallee@mcgill.ca

Bridget Goosby ('23)  
The University of Texas at Austin  
bgoosby@prc.utexas.edu

Stephanie Ureña ('23)  
The University of Maryland  
surena@umd.edu

### Membership & Comm. Officers

Miles G. Taylor  
Membership Chair  
Florida State University  
mtaylor3@fsu.edu

Stephanie Ureña  
Newsletter Editor  
The University of Maryland  
surena@umd.edu

Shannon Shen  
Newsletter Editor  
Texas A&M University-San Antonio  
sshenn@tamusa.edu

Julia Kay Wolf  
Section Web Manager  
West Virginia University  
jkwolf@mix.wvu.edu

Stacy Torres  
Listserv Manager  
University of California, San Francisco  
stacy.torres@ucsf.edu

Jeffrey Lentz  
Facebook Manager  
University of North Georgia-Gainesville  
Jeffrey.lentz@ung.edu

Duygu Basaran  
Twitter Manager  
Graduate Center – CUNY  
dbasaransahin@gradcenter.cuny.edu

